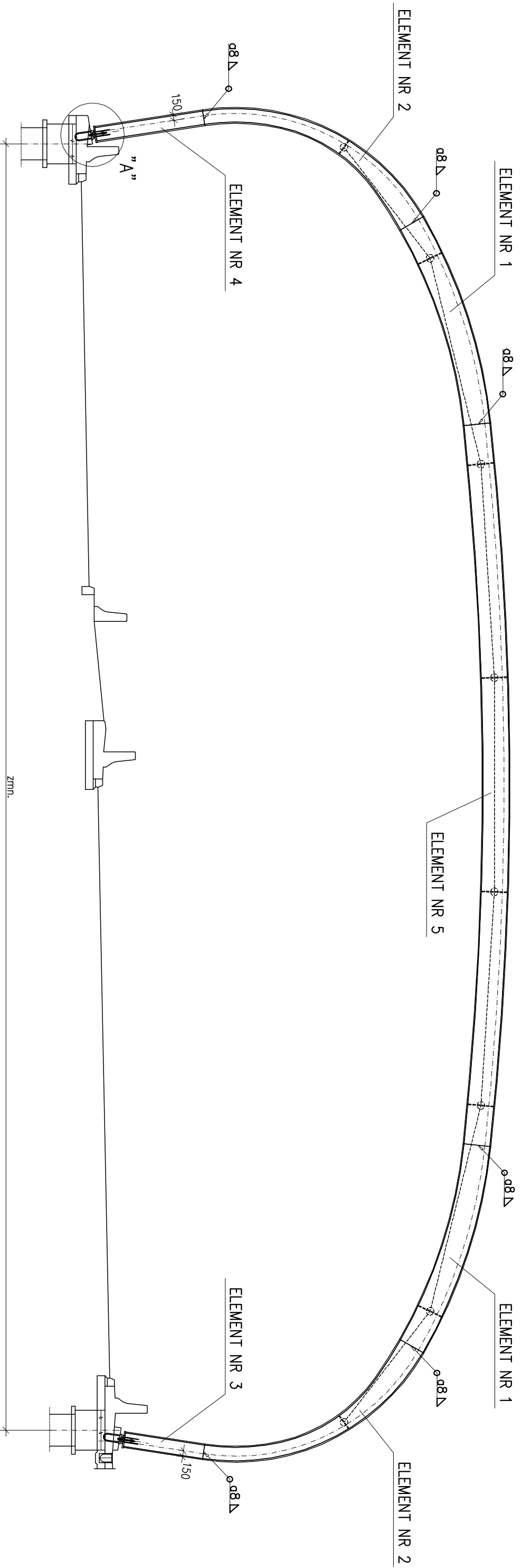
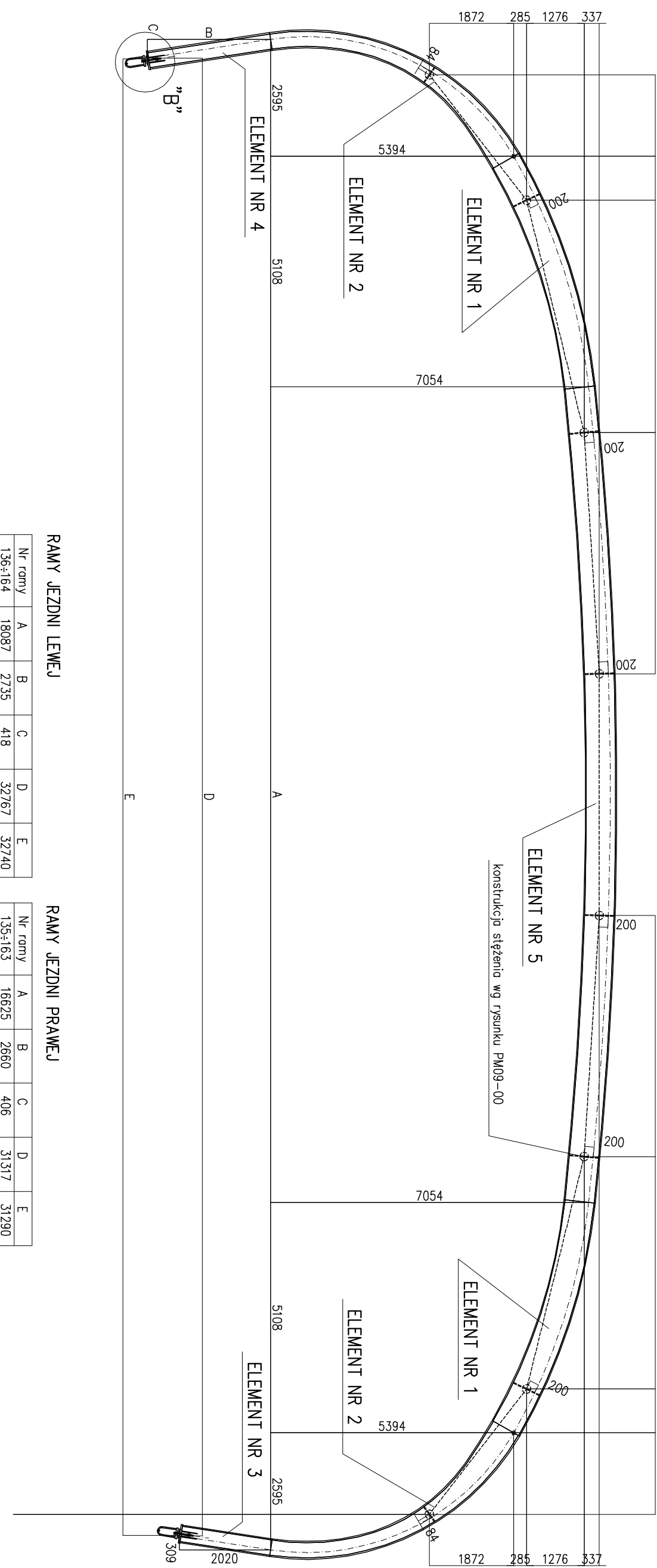


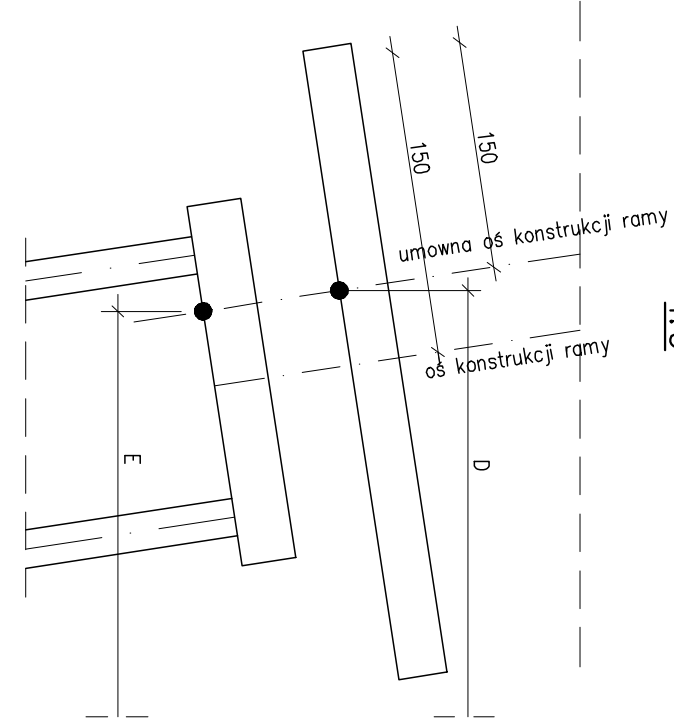
RAMA TYPU III  
PRZĘKROJE PORZĘCZNY  
1:100



RAMA TYPU III  
PRZĘKROJE PORZĘCZNY-GEOMETRIA KONSTRUKCJI STALOWEJ  
1:100

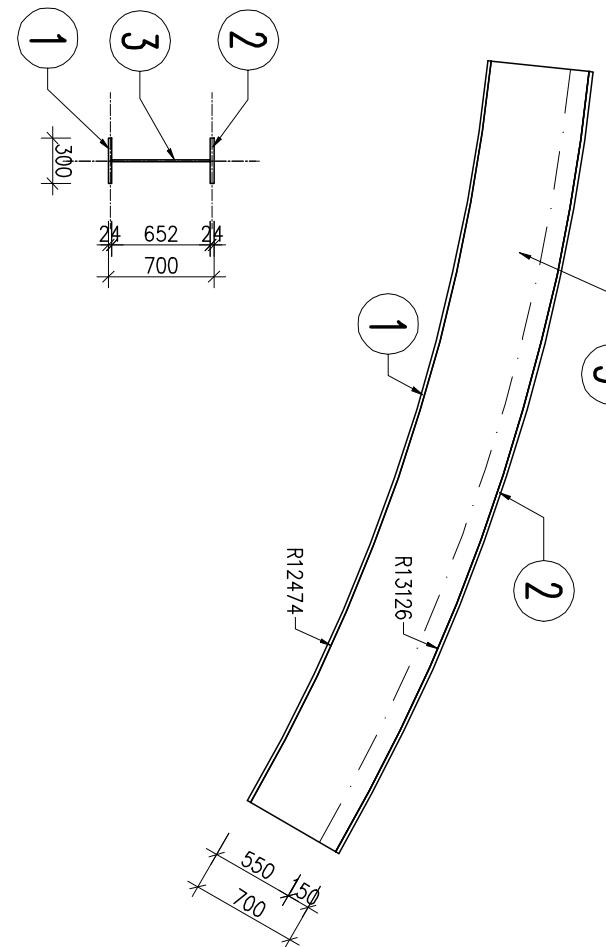


| RAMY JEZDNI LEWEJ |        |      |     |        |        | RAMY JEZDNI PRAWEJ |        |      |     |        |        |
|-------------------|--------|------|-----|--------|--------|--------------------|--------|------|-----|--------|--------|
| Nr kolejny        | Nr     | B    | C   | D      | E      | Nr kolejny         | Nr     | B    | C   | D      | E      |
| 136/464           | 186/2  | 2735 | 418 | 329/27 | 327/46 | 135/463            | 186/25 | 2660 | 406 | 333/27 | 329/30 |
| 280/294           | 172/41 | 2700 | 412 | 319/27 | 319/00 | 281/311            | 180/1  | 2700 | 412 | 320/27 | 320/70 |
| 296               | 1723/8 | 2680 | 409 | 319/27 | 319/00 | 296                | 1723/8 | 2680 | 409 | 319/27 | 319/00 |
| 298               | 1723/3 | 2645 | 404 | 319/27 | 319/00 | 298                | 1723/3 | 2645 | 404 | 319/27 | 319/00 |
| 300               | 1723/3 | 2645 | 404 | 319/27 | 319/00 | 300                | 1723/3 | 2645 | 404 | 319/27 | 319/00 |
| 302               | 1723/3 | 2645 | 404 | 319/27 | 319/00 | 302                | 1723/3 | 2645 | 404 | 319/27 | 319/00 |
| 304               | 1719/9 | 2425 | 370 | 319/27 | 319/00 | 304                | 1719/9 | 2425 | 370 | 319/27 | 319/00 |
| 306               | 1718/3 | 2350 | 354 | 319/27 | 319/00 | 306                | 1718/3 | 2350 | 354 | 319/27 | 319/00 |
| 308               | 1716/8 | 2250 | 339 | 319/27 | 319/00 | 308                | 1716/8 | 2250 | 339 | 319/27 | 319/00 |
| 310               | 1714/2 | 2175 | 323 | 319/27 | 319/00 | 310                | 1714/2 | 2175 | 323 | 319/27 | 319/00 |

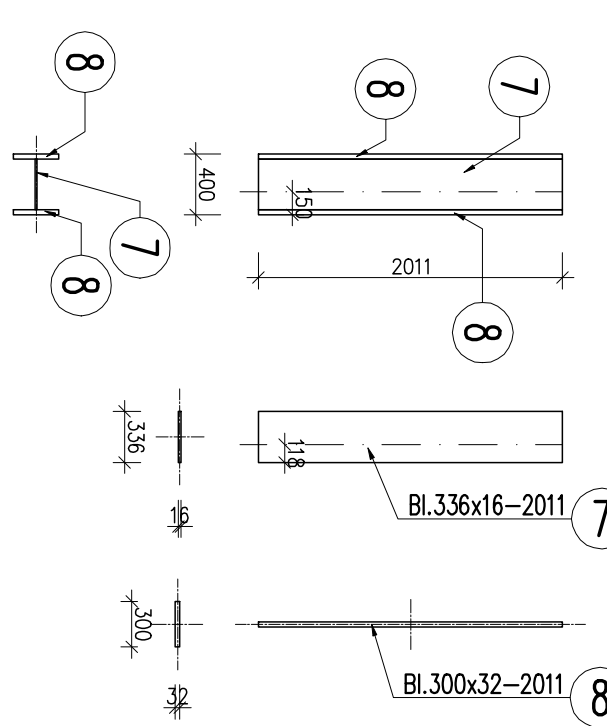


| Nr kolejny                           | Przebieg          | Przebieg | Masa      | Powierzchnia | Całkowita | Uwagi |
|--------------------------------------|-------------------|----------|-----------|--------------|-----------|-------|
| posz. [m <sup>2</sup> ]              | [m <sup>2</sup> ] | 1 sat.   | całkowita | indukcyjna   | metrowa   |       |
| 1                                    | 2                 | 3        | 4         | 5            | 6         | 7     |
| Bramy: RAMA TYPU III                 |                   |          |           |              |           |       |
| 1                                    | 2                 | 3        | 4         | 5            | 6         | 7     |
| 1                                    | 2                 | 3        | 4         | 5            | 6         | 7     |
| 2                                    | 3                 | 4        | 5         | 6            | 7         | 8     |
| 3                                    | 4                 | 5        | 6         | 7            | 8         | 9     |
| 4                                    | 5                 | 6        | 7         | 8            | 9         |       |
| 5                                    | 6                 | 7        | 8         | 9            |           |       |
| 6                                    | 7                 | 8        | 9         |              |           |       |
| 7                                    | 8                 | 9        |           |              |           |       |
| 8                                    | 9                 |          |           |              |           |       |
| 9                                    |                   |          |           |              |           |       |
| 10                                   |                   |          |           |              |           |       |
| 11                                   |                   |          |           |              |           |       |
| 12                                   |                   |          |           |              |           |       |
| 13                                   |                   |          |           |              |           |       |
| 14                                   |                   |          |           |              |           |       |
| 15                                   |                   |          |           |              |           |       |
| 16                                   |                   |          |           |              |           |       |
| 17                                   |                   |          |           |              |           |       |
| 18                                   |                   |          |           |              |           |       |
| Suma dla RAMA TYPU III 1 sat.        |                   |          |           |              |           |       |
| Masa                                 |                   |          |           |              |           |       |
| Masa konstrukcji dla ramy            |                   |          |           |              |           |       |
| Dodatk. do masy zamierzanej - 23,5 t |                   |          |           |              |           |       |
| Masa całkowita dla ramy              |                   |          |           |              |           |       |
| Powierzchnia wykonana dla ramy       |                   |          |           |              |           |       |

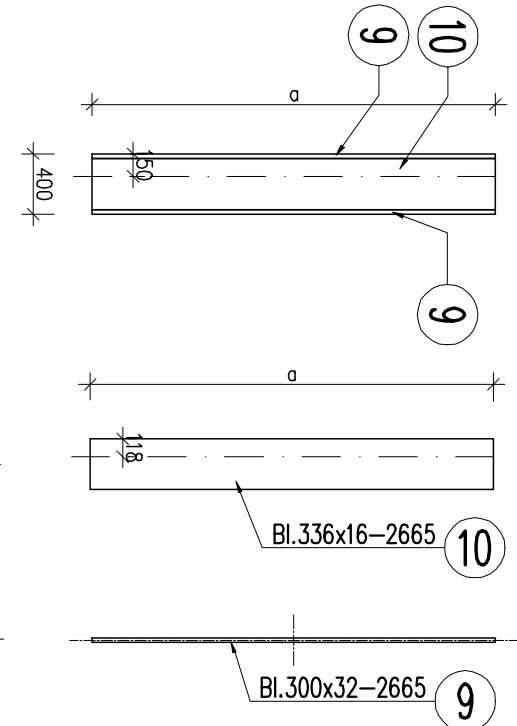
ELEMENT NR 1  
1:50



ELEMENT NR 3  
1:50

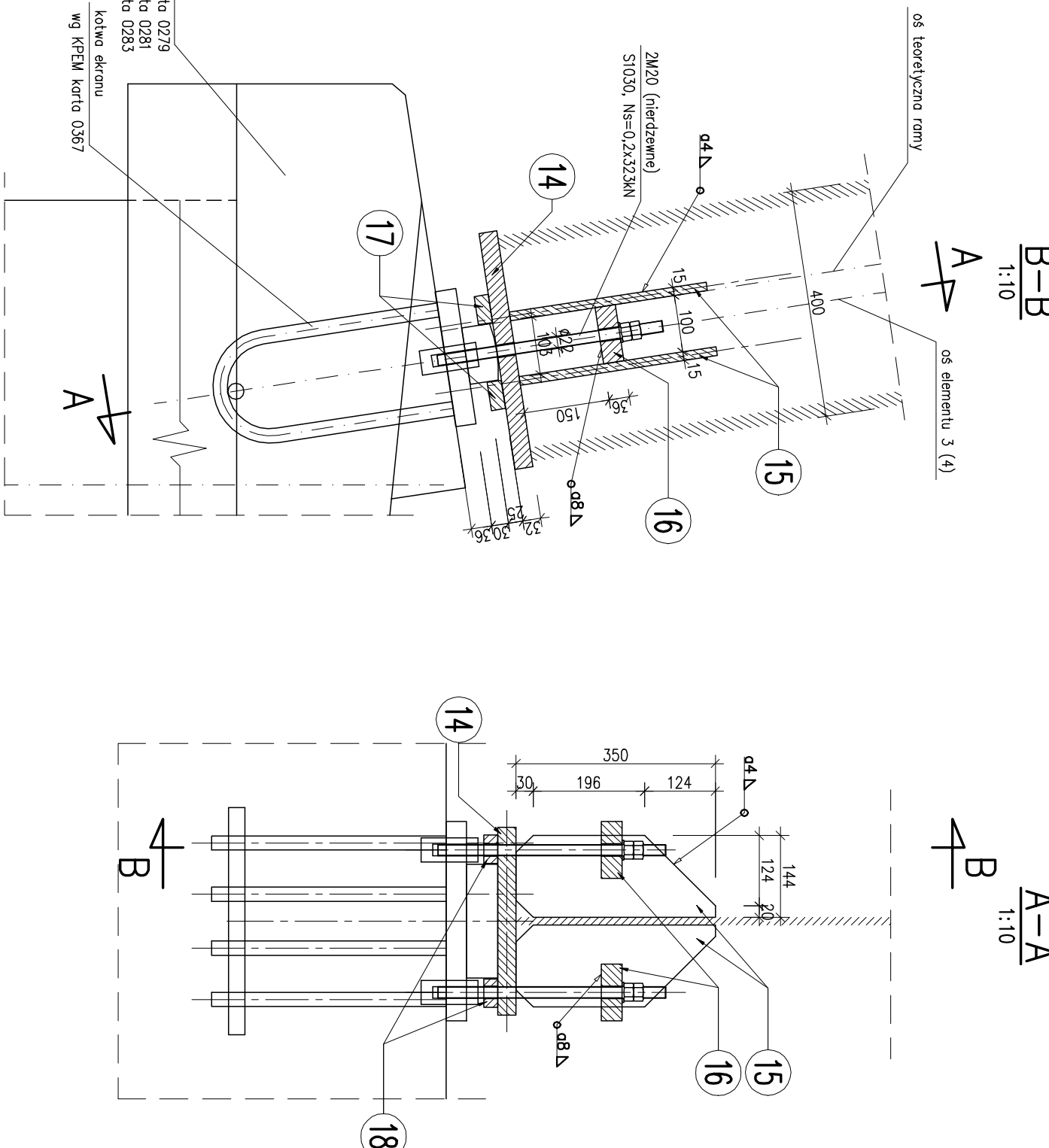


ELEMENT NR 4  
1:50

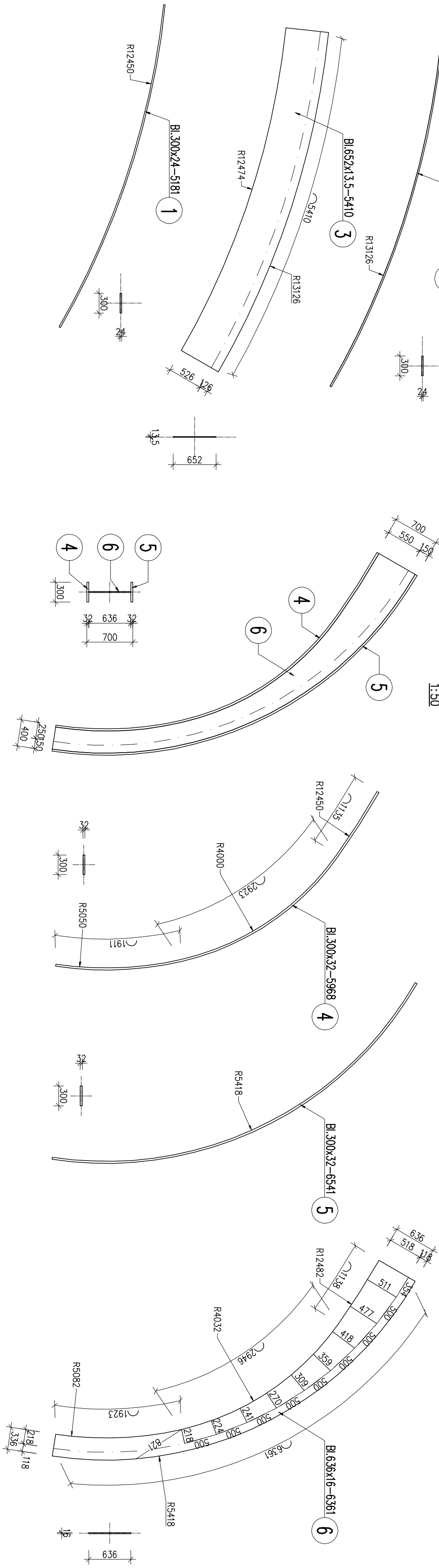


| RAMY JEZDNI LEWEJ |        |      |     |        |        | RAMY JEZDNI PRAWEJ |        |      |     |        |        |
|-------------------|--------|------|-----|--------|--------|--------------------|--------|------|-----|--------|--------|
| Nr kolejny        | Nr     | B    | C   | D      | E      | Nr kolejny         | Nr     | B    | C   | D      | E      |
| 136/464           | 186/2  | 2735 | 418 | 329/27 | 327/46 | 135/463            | 186/25 | 2660 | 406 | 333/27 | 329/30 |
| 280/294           | 172/41 | 2700 | 412 | 319/27 | 319/00 | 281/311            | 180/1  | 2700 | 412 | 320/27 | 320/70 |
| 296               | 1723/8 | 2680 | 409 | 319/27 | 319/00 | 296                | 1723/8 | 2680 | 409 | 319/27 | 319/00 |
| 298               | 1723/3 | 2645 | 404 | 319/27 | 319/00 | 298                | 1723/3 | 2645 | 404 | 319/27 | 319/00 |
| 300               | 1723/3 | 2645 | 404 | 319/27 | 319/00 | 300                | 1723/3 | 2645 | 404 | 319/27 | 319/00 |
| 302               | 1723/3 | 2645 | 404 | 319/27 | 319/00 | 302                | 1723/3 | 2645 | 404 | 319/27 | 319/00 |
| 304               | 1719/9 | 2425 | 370 | 319/27 | 319/00 | 304                | 1719/9 | 2425 | 370 | 319/27 | 319/00 |
| 306               | 1718/3 | 2350 | 354 | 319/27 | 319/00 | 306                | 1718/3 | 2350 | 354 | 319/27 | 319/00 |
| 308               | 1716/8 | 2250 | 339 | 319/27 | 319/00 | 308                | 1716/8 | 2250 | 339 | 319/27 | 319/00 |
| 310               | 1714/2 | 2175 | 323 | 319/27 | 319/00 | 310                | 1714/2 | 2175 | 323 | 319/27 | 319/00 |

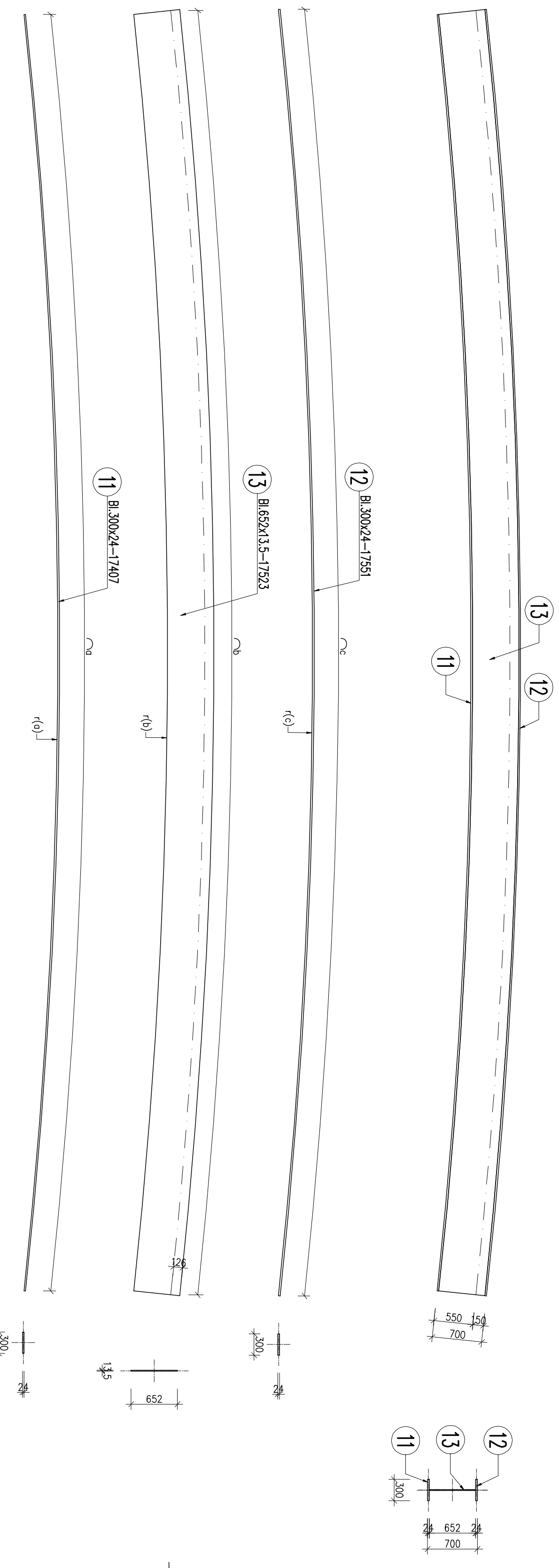
SZCZEGÓŁ "A"



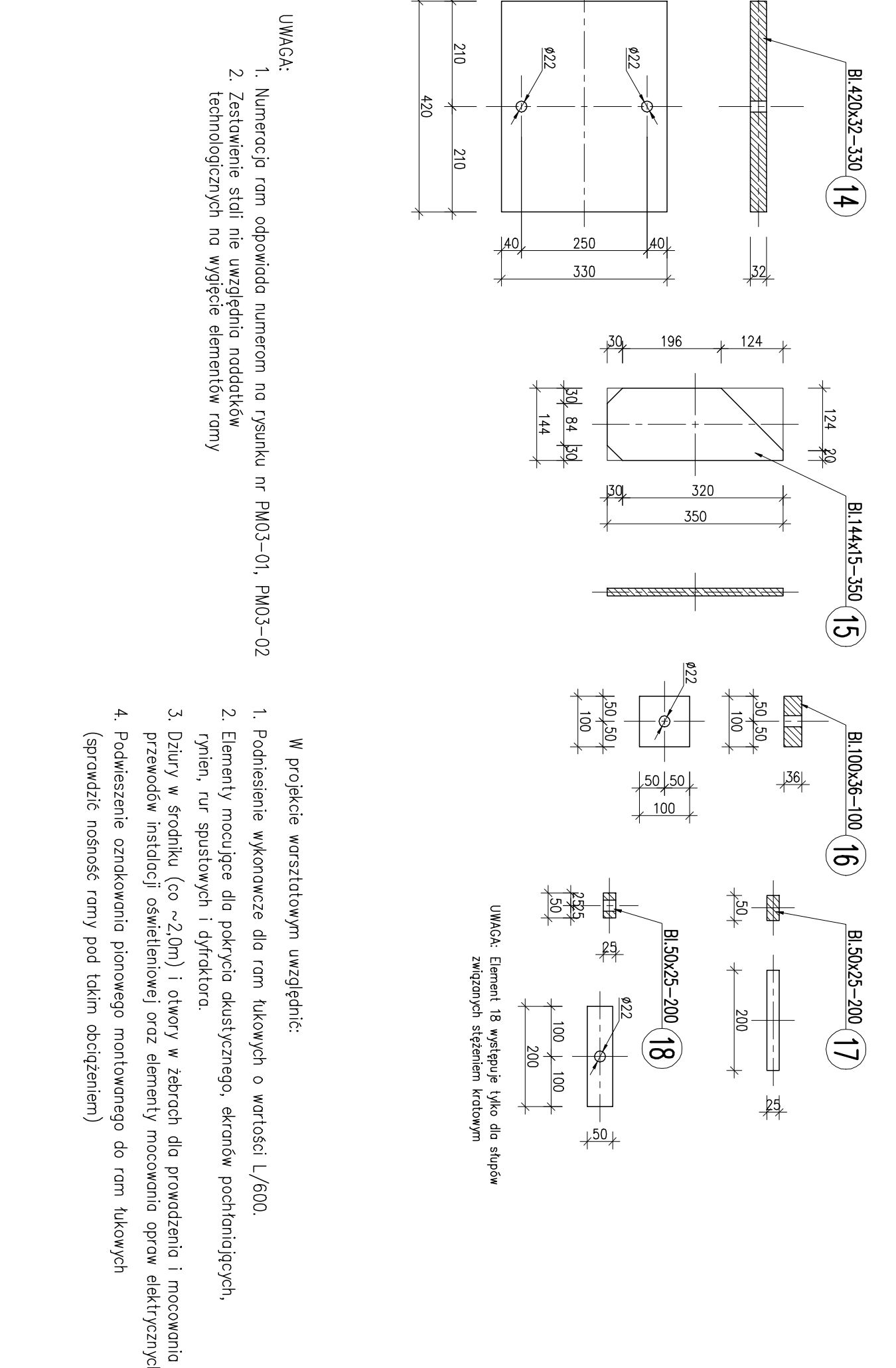
ELEMENT NR 2  
1:50



ELEMENT NR 5  
1:50



| RAMY JEZDNI LEWEJ |        |      |     |        |        | RAMY JEZDNI PRAWEJ |        |      |     |        |        |
|-------------------|--------|------|-----|--------|--------|--------------------|--------|------|-----|--------|--------|
| Nr kolejny        | Nr     | B    | C   | D      | E      | Nr kolejny         | Nr     | B    | C   | D      | E      |
| 136/464           | 186/2  | 2735 | 418 | 329/27 | 327/46 | 135/463            | 186/25 | 2660 | 406 | 333/27 | 329/30 |
| 280/294           | 172/41 | 2700 | 412 | 319/27 | 319/00 | 281/311            | 180/1  | 2700 | 412 | 320/27 | 320/70 |
| 296               | 1723/8 | 2680 | 409 | 319/27 | 319/00 | 296                | 1723/8 | 2680 | 409 | 319/27 | 319/00 |
| 298               | 1723/3 | 2645 | 404 | 319/27 | 319/00 | 298                | 1723/3 | 2645 | 404 | 319/27 | 319/00 |
| 300               | 1723/3 | 2645 | 404 | 319/27 | 319/00 | 300                | 1723/3 | 2645 | 404 | 319/27 | 319/00 |
| 302               | 1723/3 | 2645 | 404 | 319/27 | 319/00 | 302                | 1723/3 | 2645 | 404 | 319/27 | 319/00 |
| 304               | 1719/9 | 2425 | 370 | 319/27 | 319/00 | 304                | 1719/9 | 2425 | 370 | 319/27 | 319/00 |
| 306               | 1718/3 | 2350 | 354 | 319/27 | 319/00 | 306                | 1718/3 | 2350 | 354 | 319/27 | 319/00 |
| 308               | 1716/8 | 2250 | 339 | 319/27 | 319/00 | 308                | 1716/8 | 2250 | 339 | 319/27 | 319/00 |
| 310               | 1714/2 | 2175 | 323 | 319/27 | 319/00 | 310                | 1714/2 | 2175 | 323 | 319/27 | 319/00 |



| RAMY JEZDNI LEWEJ |        |      |     |        |        | RAMY JEZDNI PRAWEJ |        |      |     |        |        |
|-------------------|--------|------|-----|--------|--------|--------------------|--------|------|-----|--------|--------|
| Nr kolejny        | Nr     | B    | C   | D      | E      | Nr kolejny         | Nr     | B    | C   | D      | E      |
| 136/464           | 186/2  | 2735 | 418 | 329/27 | 327/46 | 135/463            | 186/25 | 2660 | 406 | 333/27 | 329/30 |
| 280/294           | 172/41 | 2700 | 412 | 319/27 | 319/00 | 281/311            | 180/1  | 2700 | 412 | 320/27 | 320/70 |
| 296               | 1723/8 | 2680 | 409 | 319/27 | 319/00 | 296                | 1723/8 | 2680 | 409 | 319/27 | 319/00 |
| 298               | 1723/3 | 2645 | 404 | 319/27 | 319/00 | 298                | 1723/3 | 2645 | 404 | 319/27 | 319/00 |
| 300               | 1723/3 | 2645 | 404 | 319/27 | 319/00 | 300                | 1723/3 | 2645 | 404 | 319/27 | 319/00 |
| 302               | 1723/3 | 2645 | 404 | 319/27 | 319/00 | 302                | 1723/3 | 2645 | 404 | 319/27 | 319/00 |
| 304               | 1719/9 | 2425 | 370 | 319/27 | 319/00 | 304                | 1719/9 | 2425 | 370 | 319/27 | 319/00 |
| 306               | 1718/3 | 2350 | 354 | 319/27 | 319/00 | 306                | 1718/3 | 2350 | 354 | 319/27 | 319/00 |
| 308               | 1716/8 | 2250 | 339 | 319/27 | 319/00 | 308                | 1716/8 | 2250 | 339 | 319/27 | 319/00 |
| 310               | 1714/2 | 2175 | 323 | 319/27 | 319/00 | 310                | 1714/2 | 2175 | 323 | 319/27 | 319/00 |

| RAMY JEZDNI LEWEJ |        |      |     |        |        | RAMY JEZDNI PRAWEJ |        |      |     |        |        |
|-------------------|--------|------|-----|--------|--------|--------------------|--------|------|-----|--------|--------|
| Nr kolejny        | Nr     | B    | C   | D      | E      | Nr kolejny         | Nr     | B    | C   | D      | E      |
| 136/464           | 186/2  | 2735 | 418 | 329/27 | 327/46 | 135/463            | 186/25 | 2660 | 406 | 333/27 | 329/30 |
| 280/294           | 172/41 | 2700 | 412 | 319/27 | 319/00 | 281/311            | 180/1  | 2700 | 412 | 320/27 | 320/70 |
| 296               | 1723/8 | 2680 | 409 | 319/27 | 319/00 | 296                | 1723/8 | 2680 | 409 | 319/27 | 319/00 |
| 298               | 1723/3 | 2645 | 404 | 319/27 | 319/00 | 298                | 1723/3 | 2645 | 404 | 319/27 | 319/00 |
| 300               | 1723/3 | 2645 | 404 | 319/27 | 319/00 | 300                | 1723/3 | 2645 | 404 | 319/27 | 319/00 |
| 302               | 1723/3 | 2645 | 404 | 319/27 | 319/00 | 302                | 1723/3 | 2645 | 404 | 319/27 | 319/00 |
| 304               | 1719/9 | 2425 | 370 | 319/27 | 319/00 | 304                | 1719/9 | 2425 | 370 | 319/27 | 319/00 |
| 306               | 1718/3 | 2350 | 354 | 319/27 | 319/00 | 306                | 1718/3 | 2350 | 354 | 319/27 | 319/00 |
| 308               | 1716/8 | 2250 | 339 | 319/27 | 319/00 | 308                | 1716/8 | 2250 | 339 | 319/27 | 319/00 |
| 310               | 1714/2 | 2175 | 323 | 319/27 | 319/00 | 310                | 1714/2 | 2175 | 323 | 319/27 | 319/00 |