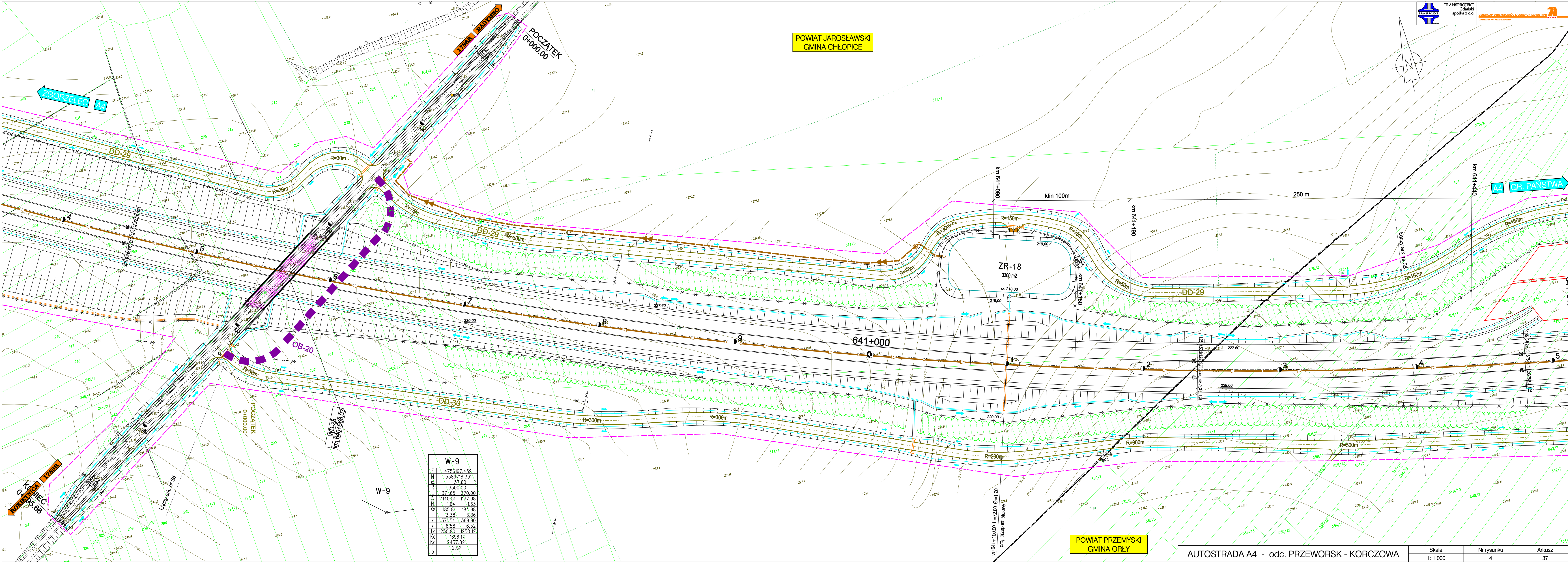


POWIAT JAROSŁAWSKI
GMINA CHŁOPICE



| W-9 | |
|-----|-----------------|
| E | 4756167.459 |
| N | 5389718.331 |
| α | 37.60 |
| R | 3500.00 |
| A | 371.65 370.00 |
| H | 1.64 1.63 |
| Xs | 185.81 184.98 |
| r | 3.38 3.36 |
| x | 371.54 369.90 |
| y | 6.58 6.52 |
| c | 1250.90 1250.12 |
| Ko | 1696.17 |
| Kc | 2437.82 |
| i | 2.5% |
| p | - |

POWIAT PRZEMYSKI
GMINA ORŁY

AUTOSTRADA A4 - odc. PRZEWORSK - KORCZOWA