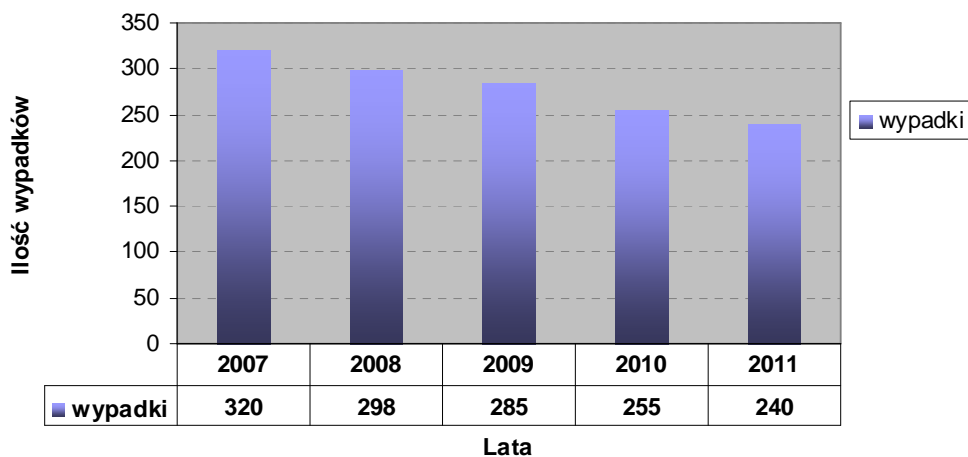
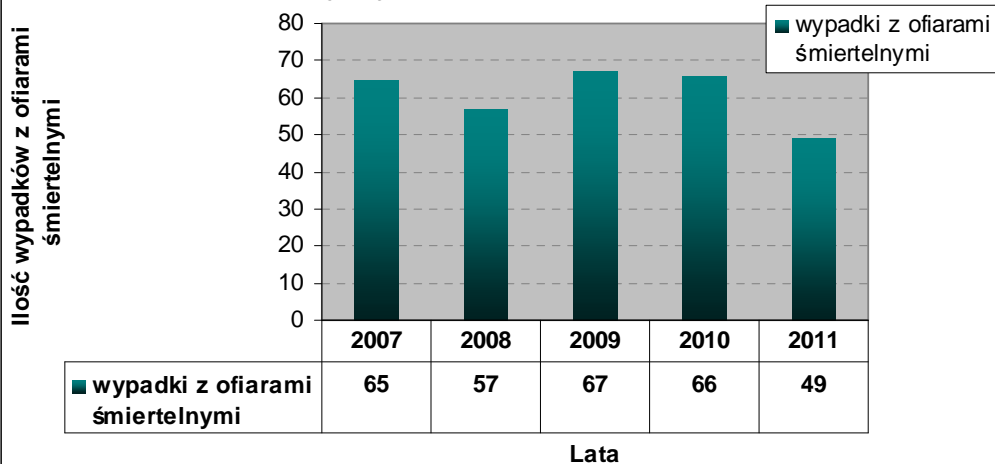


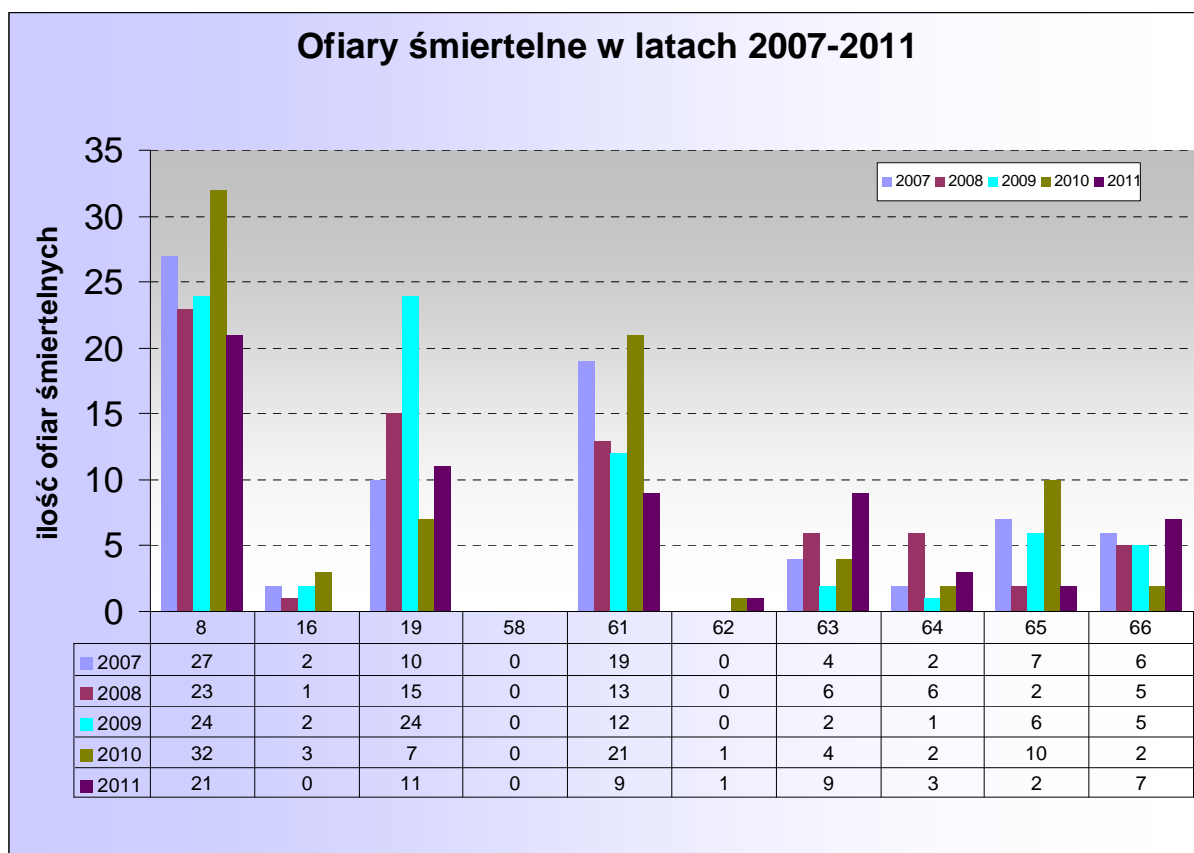
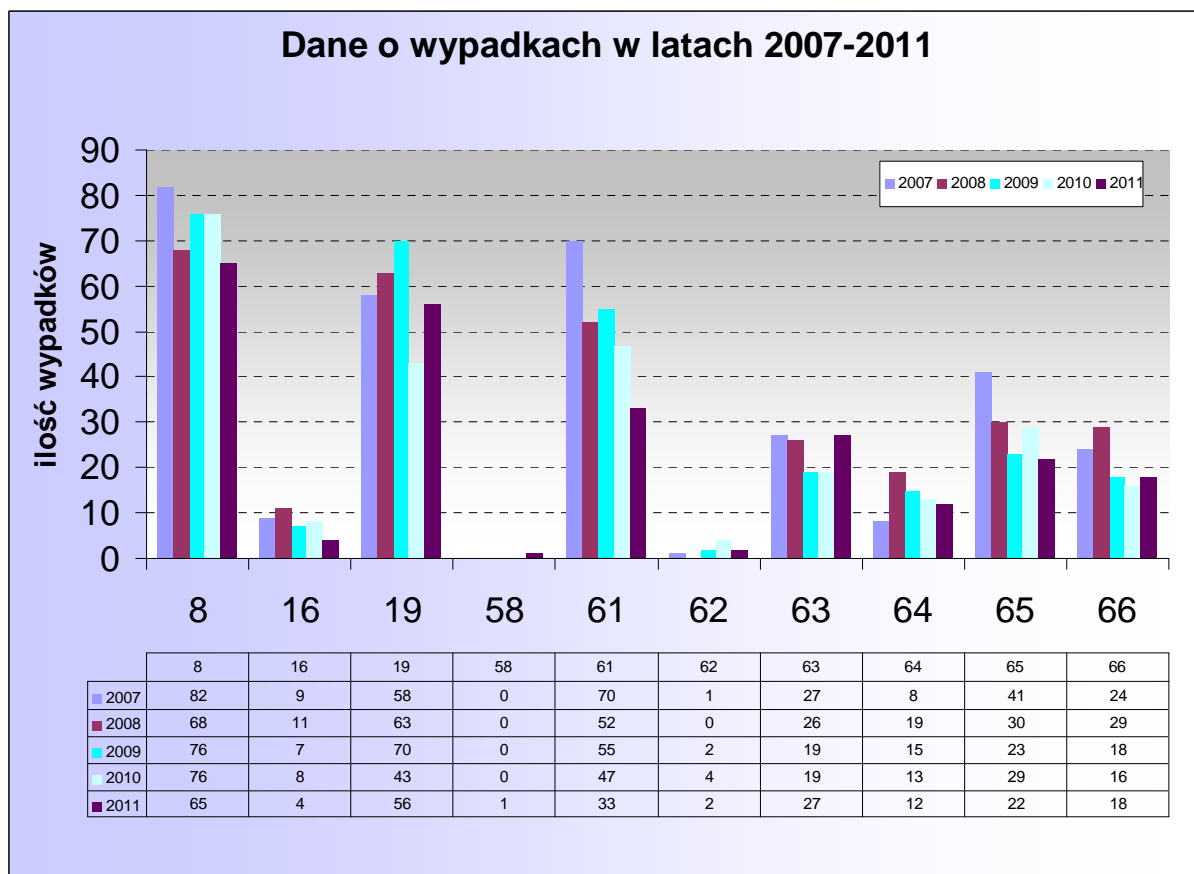
### Wypadki na drogach krajowych w latach 2007 - 2011



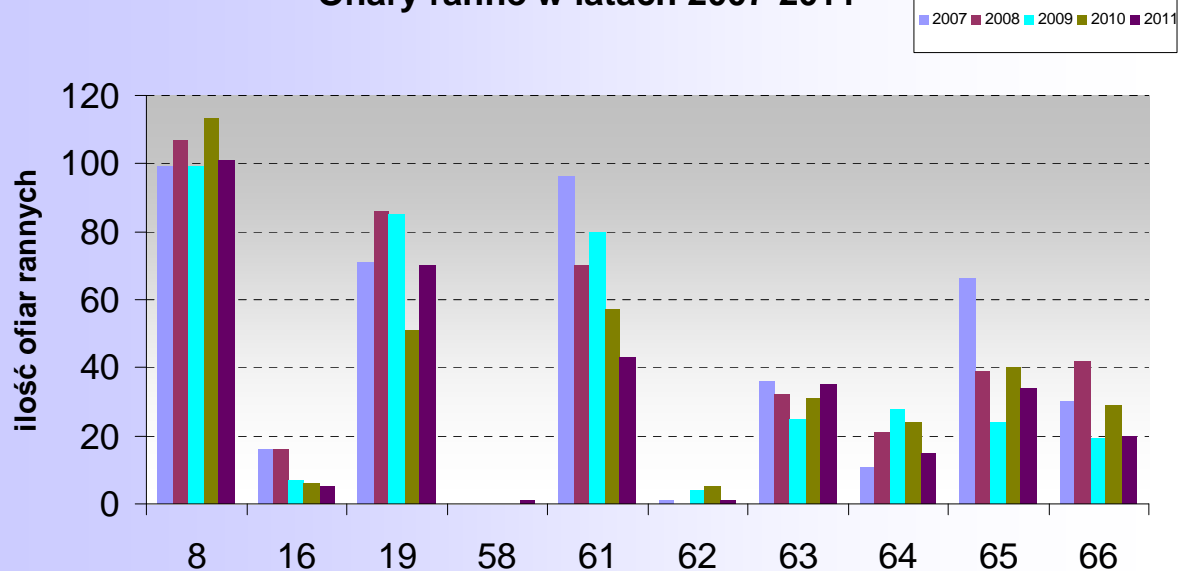
### Ilość wypadków z ofiarami śmiertelnymi na drogach krajowych w latach 2007 - 2011



**Dane o wypadkach na poszczególnych drogach krajowych w latach 2007 – 2011.**

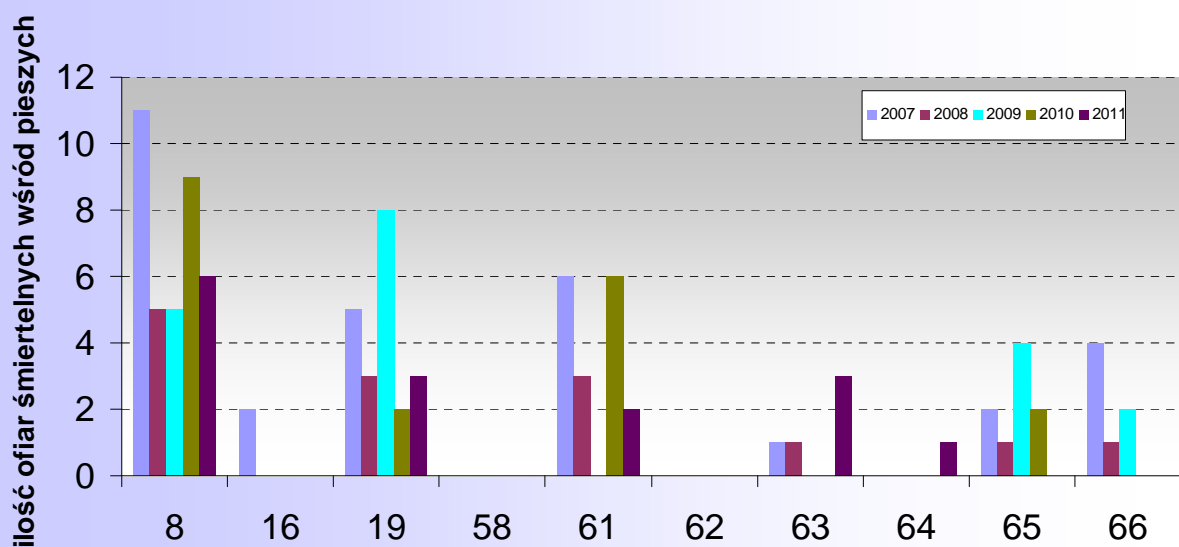


## Ofiary ranne w latach 2007-2011



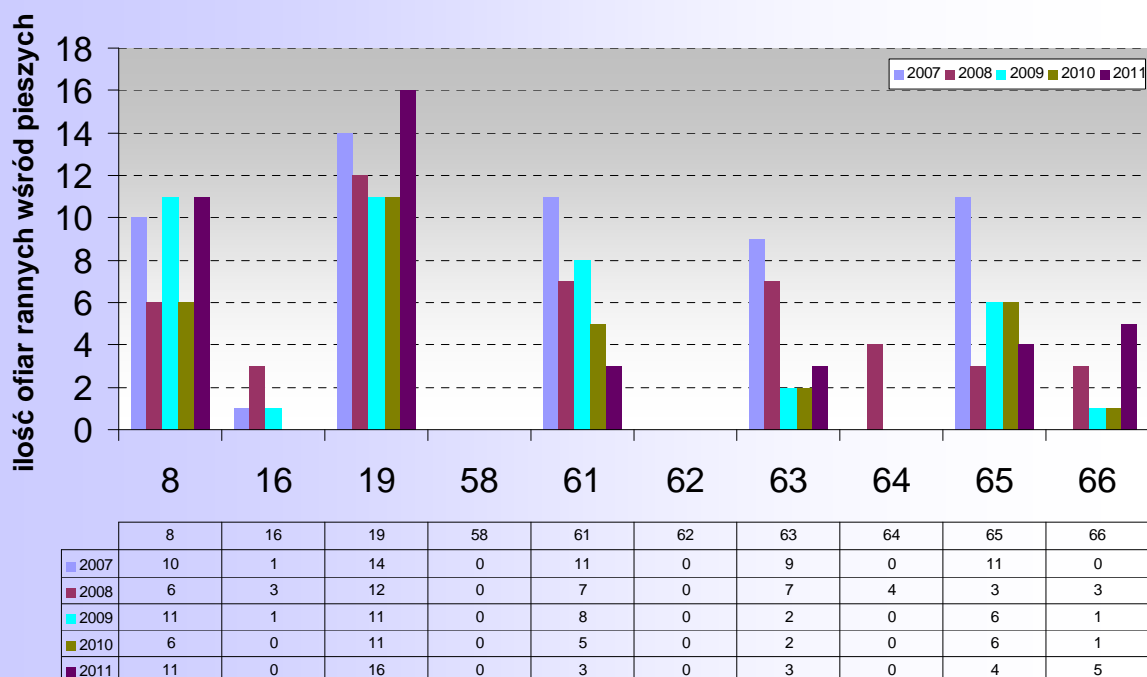
	8	16	19	58	61	62	63	64	65	66
2007	99	16	71	0	96	1	36	11	66	30
2008	107	16	86	0	70	0	32	21	39	42
2009	99	7	85	0	80	4	25	28	24	19
2010	113	6	51	0	57	5	31	24	40	29
2011	101	5	70	1	43	1	35	15	34	20

## piesi zabici w latach 2007-2011



	8	16	19	58	61	62	63	64	65	66
2007	11	2	5	0	6	0	1	0	2	4
2008	5	0	3	0	3	0	1	0	1	1
2009	5	0	8	0	0	0	0	0	4	2
2010	9	0	2	0	6	0	0	0	2	0
2011	6	0	3	0	2	0	3	1	0	0

## Piesi ranni w latach 2007-2011



## Wypadki z ofiarami śmiertelnymi w latach 2007-2011

